

PERFORMANCE HISTORY AND RELIABILITY EASE TRANSPORTATION ORGANIZATION'S DATA COMMUNICATIONS



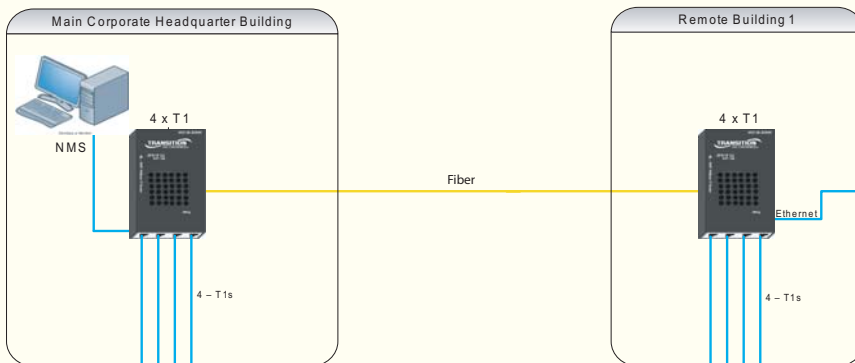
YOUR NETWORK. OUR CONNECTION.

CHALLENGE

Like most transportation companies, their biggest challenge is the need to send information from one end of their network to the other. It was important to be able to do this efficiently, while also utilizing the fiber optics that were already in place within their network. All of the companies communication paths between the CSU/DSU's and T1 routers are transported over both copper and fiber via T1 and Ethernet. Therefore the more T1 lines that could be transported over one pair of fiber the better.

SOLVING THE PROBLEM

The transportation organization chose to use Transition Networks' S4TEF10xx-11x - 4 x T1 mux as a reliable transport to increase the capacity of their existing T1 network, by multiplexing four T1 channels over single mode fiber. This allowed the company to convert their four T1 lines used to transport their point of sale data, traffic control light system information and IP video surveillance over their already existing fiber infrastructure.



RESULTS

Transition's unmatched reliability, remote troubleshooting capabilities, and multiplexing function of their 4 x T1 transport mux have helped the transportation organization to significantly reduce their overall capital expenditures (CAPEX) and operating expenditures (OPEX) costs. The primary reduction in OPEX was due to their ability to significantly lower fiber maintenance fees, by lowering the number of active fiber strands needed across the network.

S4TEF10xx-11x



Features:

- 802.1Q VLAN Management
- Auto-Negotiation
- AutoCross™ (auto MDI/MDI-X)
- Transparent Link Pass Through
- Automatic Link Restoration
- Pause (Flow Control)
- Remote Management
- Local and Remote Loopback
- Remote Fiber Loss Signaling
- AIS/TAOS